

Chitina Native Corporation

NEWSLETTER

A Message from the President

Board of Directors

Anne Thomas, President
 Katherine McConkey, Vice President
 Arieen Lenard, Secretary
 Danna Finnesand, Treasurer
 Harry Billum, Board Member
 Martin Finnesand, Honorary Elder

Staff

Loni Lohse, Office Manager
 Dustin Slocum, Trespass Officer

CNC Shareholders:

The Board enjoyed meeting with the shareholders at the Annual Meeting. At that time, there were many reports made on the advances the Board has been making to add to your Stockholder Equity in Chitina Native Corporation. At that meeting the members of Board who were running for offices were reinstated to their previous positions. As the CNC Board is a strong working board, this has resulted in the Board being able to continue projects without losing momentum. I have greatly enjoyed working with this Board. I think the shareholders can be very proud of the work they are doing.

The Board continues in its endeavors to enter into the corporate business world of contracting and generating revenues for your corporation. As previously indicated, the Board is always ready to listen to ideas and suggestions from you as shareholders.

We hope the rest of the summer went well for you and you enjoyed a prosperous hunting and fishing season.

The Board looks forward to again meeting with you in December at the Christmas Social. "Be sure to look at page 2 of this Newsletter for the time and place."

Best of wishes to each of you in the coming year.

CHITINA NATIVE CORPORATION

Anne Thomas, President

Inside this issue:

Chitina Electric, Inc	2
Holiday Social	2
Chitina Memorial Fund Donation	2
Taral Enterprises, LLC	3
CNC 8(a) Update	4
14(c)(1) Land Status Update	4
CNC Dividend	5

Tsedi Na' Foundation

Tsedi Na' Foundation was recently formed as a Non Profit under the Chitina Native Corporation. With the focus being Cultural Preservation and Education.

This year we held two cultural events in July, here in Chitina,

Alaska. Crafty Camp was on July 14th, for the younger generation, they were able to do various art projects and learn how to can salmon from start to the finishing product. Then on July 24th, was the Culture Camp held at 5 Mile Fish Camp. It was nice to have the

youth and elders come eat traditional style foods; moose stew, fish head soup, salmon chowder and was thankful for all those who helped support and bring a dish to share. It was enjoyable to sit and visit, learn how to cook fish over the fire,

Chitina Electric, Inc.

In September of 2009, CEI went on line with their new power house, which is located by the Chitina 5 Mile Airport.

CEI received a Rural Power System Upgrade (RPSU) grant of a little over \$2.5 Million to relocate the power house close to 5 Mile Airport, it has state of the art switch gear controlling three John Deere generators that will automatically change and select which generator is needed

to accommodate the load that the village and town of Chitina is using. The size of the three are; 117, 117 and 67 KWs. A new 12,000 gallon fuel storage tank was also installed and heat from the engines cooling system help heat the health clinic near by.

Four point five (4.5) miles of distribution lines connect the power house with Chitina with 80 metered customers.

Daniel Stevens is the

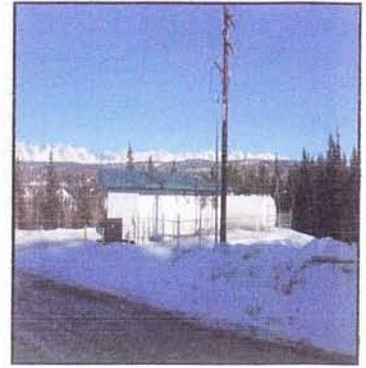
Powerhouse Operator for CEI. He went to the Seward Skill Center (AVTEC) school for 2 months, then back for 3 weeks of advance power plant operator training.

Chitina Electric, Inc. Board of Directors:

Martin Finnesand, President

Harry Billum, Vice-President

Katherine McConkey, Secretary



**Chitina Electric, Inc.
New Power House**

CHRISTMAS SOCIAL

Chitina Native Corporation will be hosting a Christmas Social on December 4th, 2010 at 3:00 p.m.

The location for the CNC Christmas Social will be:

Inlet Towers Hotel
1200 L Street
Anchorage, Alaska 99501-4265
(907) 276-0110 inlettower.com

*"For unto you is
born this day in the
city of David a
Savior, who is
Christ, the Lord.
(Luke 2:11)"*

We invite all shareholders to attend the Christmas Social and welcome their families too.

Chitina Memorial Fund Donation

Purpose: To assist Chitina Native Corporation shareholders and Chitina Native Corporation descendents financially during their bereavement.

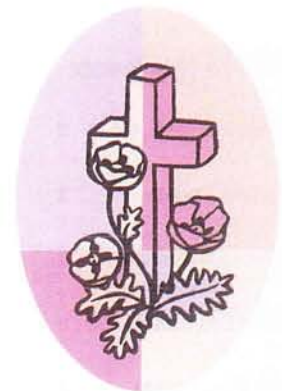
Memorial funds are made available to eligible descendents if they are determined to be a Chitina Native Corporation shareholder, or immediate family. Family members are defined as: spouse, parents, siblings, niece, nephew, uncle, aunt,

grandchild, or adopted child.

This check is intended to cover, the expenses of funeral arrangements. The check may be written to the requestor or directly to the memorial establishment that is responsible for the burial arrangements. Chitina Native Corporation personnel will issue a check to the memorial establishment if there is more than one family member requesting the funds.

Chitina Native Corporation will not provide additional funding for airfare, or additional cost above the established six hundred dollars (\$600) memorial fund.

Contact the Chitina Native Corporation office at 907. 823.2223 to make a request or if you may have additional questions.



Tsedi Na' Foundation Cont.

and filleting their own salmon. Our vision is to continue with this yearly tradition of Camp festivities, that would include; Processing a moose from skinning, processing the meat, preserving that meat and then to tan the hide to be used in the youth making craft items. We would like to thank the following agencies that contributed to our Foundation this year to make our Culture Camps a success: Ahtna, Inc., Parks Place and Chitina

Native Corporation.

This year the Tsedi Na' Foundation has started dispersing Higher Education Scholarship awards on behalf of Chitina Native Corporation's donations to the fund for the benefit of Chitina Native Corporation shareholders. Applications are due no later than December 15th for the Spring Semester.

Tsedi Na Foundation is currently in the process of getting ap-

proved for Tax Exempt status with the Internal Revenue Service under 501 (c) (3), in order to apply for grants and allow donations to the organization be tax deductible.

Tsedi Na' Board of Directors:

Arleen Lenard, President

Danna Finnesand, VP/Treasurer

Corina Finnesand, Secretary



2010 Culture Camp

Taral Enterprises, LLC

As we are heading into winter, I would like to give an update of changes in the past year:

Wrangell View Store now has a beautiful view of the town lake! This new and central location has been very successful allowing us to attract more customers and increase sales while enjoying the beautiful view of Town Lake.

We brought in more supplies to better accommodate tourists and visitors in the area. We now sell dip nets, fishing poles, camping gear, local native crafts to meet their needs while visiting our area. For our local customers we have maintained reasonable prices and purchased a large cooler to allow us to keep a wider variety of produce in stock.

Moving the store required some major maintenance to accommodate a business in that area. First, in early spring, we brought in gravel to reduce dust and mud allowing much better access to the store. In mid-summer, a septic pipe had to be repaired and will require more gravel brought in to fill in the area where work was done on the septic line.

Through it all, we have continued to profit, requiring less financial support from CNC. If this trend continues, we hope to be 100% self sufficient and profit bearing in the near future.

Future goals- We will be adding more gravel up to the store this fall to recover the damaged area due to the septic pipe. Upgrading the driveway up to the store with D-1,

for smoother and safer access.

We will be putting a deck, tables and seating around the front of the store, if it can be done within reason..

We are looking to add more arts and crafts from local artists and shareholders, so please call the Taral office at (907)823.2255 for information.

Summer Hours:
7 days a week
9:00 am-9:00 pm

Fall Hours:
7 days a week
10:00 am-6:00 pm

Winter Hours:
Monday - Saturday
10:00 am - 6:00 pm



Wrangell View Store



Wrangell View RV Park

Taral Enterprises, LLC Board of Directors:

Danna Finnesand, President
Katherine McConkey, VP
Michelle Bayless, Secretary

Chitina Native Corporation 8 (a) Application Status

The 8(a) Business Development Program application has been completed and the Chitina Native Corporation staff and 8(a) committee members are putting together the required 8(a) program application documents.

Chitina Native Corporation has hired Katherine Anderson with KSA Consulting Services to ensure that our application is professional and complete.

As we continue the first steps of getting our 8(a) application

together; we have been in the process of developing our Business Plans for Chitina Native Corporation and subsidiaries.



14(C) Land Status Update

Chitina Native Corporation has contracted with Copper Raven Forest Services to complete the process of fulfilling the 14(c) requirements under ANSCA. This process needs to be finalized prior to Chitina Native Corporation receiving their final conveyance.

There are approximately five 14 (c)(1) claims that need to be

finalized prior to moving onto the 14(c)(2), 14(c)(3) and 14(c)(4) claims. The process for the 14(c)(1) claims, is to meet with each of the individuals, whom have valid claims and verify the land was utilized prior to December 18, 1971. This is currently at which point we are at this time. Within the next few years the claims, after being

verified and agreed to by each party will be surveyed out during Chitina Native Corporations Conveyance surveying and deeds will be given to each claimant.

*God pours life
into death and
death into life
without a drop
being spilled.
~Author
Unknown*

Other Activities We Are Working On.

The Chitina Native Corporation Board has signed a MOA with Wrangell-Saint Elias at Elliott Creek Inc. a mining company, and Ahtna Inc. an agreement to allow access to WSEECI mining claims located in the Wrangell Mountains.

Taral Enterprises, LLC is carrying the permit to manage/host Liberty Falls from the State of Alaska, as of this 2010 season through 2012.

In 2008 Chitina Native Corporation purchased the real estate that currently houses the Chitina Post Office. This has allowed CNC to carry a lease with the United States Postal Service through 2014.

Chitina Native Corporation has been working with Ahtna, Inc., Bureau of Land Management and National Parks Service on joint land issues that surround Chitina lands. We have been

working on effectively notifying the public of land status; with posting of signage in public hub centers, along trails or handouts.

Chitina Native Corporation has been very involved in keeping abreast on local subsistence hunting and fishing issues that effect our way of life. We have attended several meetings making our voices heard on both State and Federal issues and will continue to do so in the future.



In Loving Memory

Chitina Native Corporation extends condolences to the families and friends of loved ones who have passed away.

Deborah Bell

Etta Bell

Melvin Bell

Gordon Phillips

Linda Alexander

Edward Yazzie

P.O. Box 3

Chitina, Alaska 99566

Phone:(907) 823-2223

Fax: (907) 823-2202

E-mail: chitina_native@cvinternet.net

Gateway to the Wrangell St.-Elias
National Park™

We are on the web!
www.chitinanative.com

*Stay Informed by
connecting with us on
Facebook*

CNC Board

Have you seen These Shareholders?

We need your help updating the listed shareholders' addresses!

If you know the address or can locate any of the shareholders listed below, please ask him or her to give Chitina Native Corporation a current address by calling our office at (907) 823-2223 or by email at chitina_native@cvinternet.net

William A. Leonard, Jr.

Kevin S. Charley

Michael B. Charley

Wayne P. Moberg

Geraldine K. Brown

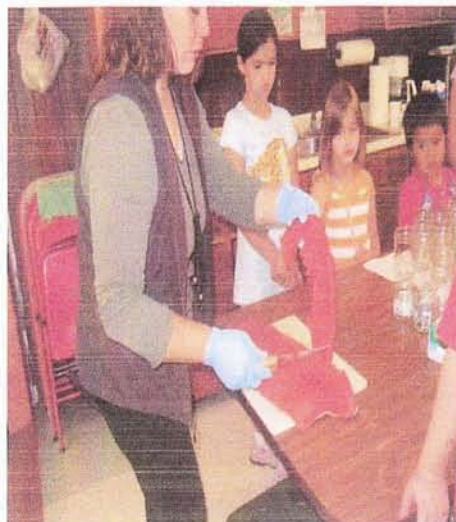
Harold J. Hobson

2010 CNC Dividends Update

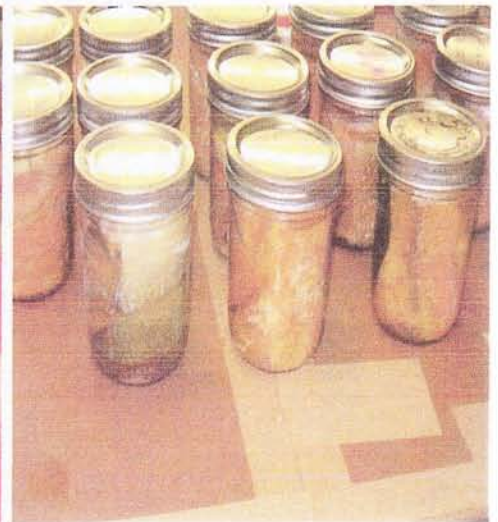
During the first week of December 2010, the office will be printing out checks to shareholders for the 2010 CNC dividends in the amount of \$1.00 per share.

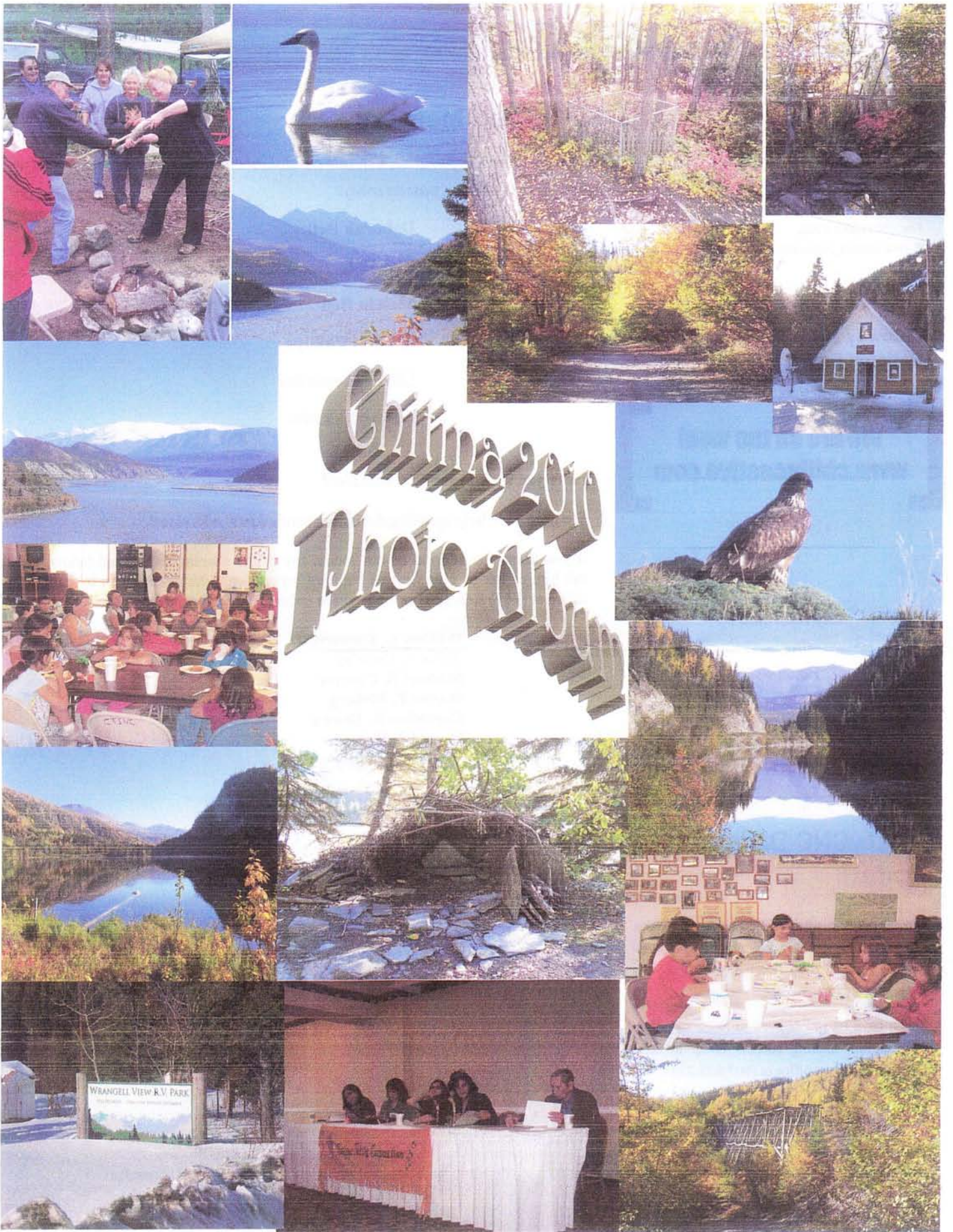
If you have moved or need to make sure that your current mailing address is up to date please contact our office at (907)823.2223.

2010 Crafty Camp Canning fish with the youth



Canned Salmon~ Finished Product





Special thanks to; Lonita A. Lohse and Arleen Lenard for the photos